

Certificados	1-2
Cables de cobre para cableado estructurado	1-3
Elementos para cableado estructurado Categoría 5e, 6 y 6a	1-4/1-5
Complementos y accesorios para Cableado estructurado	1-6
Guía de ponchado de jacks categoría 6a blindado	1-7



INGRESA A

[www.laumayer.com.ec](http://www.laumayer.com.ec)

PARA CONOCER DETALLES

Las fotografías de esta sección son de uso informativo.



CERTIFICADOS

### Compliance Statement

**ISO/IEC, EN & TIA Unscreened  
Class D / Category 5e  
VCP Connect + Three Connector Channel**

**Laumayer S.A.  
Carrera 50 C.No. 10 Sur-61  
Medellin, Colombia**  
Compliance Statement No. 117784

*This type of Class D / Category 5 unscreened three connector channel has been tested by 3P Third Party Testing and complies with the Class D requirements of Edition 2.2 of ISO/IEC 11801 and ISO/IEC 61881-2:2011, and Category 5 requirements of ISO/IEC 61881-2. The Compliance Statement is valid for the channel type in ITSSB designation and may be suspended or withdrawn if it fails to pass a Maintenance Testing performed not later than 31 September 2018. The channel consists of the following 10P Component components:*

Product Label:	4 pair, 23 AWG, UTP, CM, Nonhalogen Flame, Halophenol (SR9), Class E
Manufacturer:	LOVISOUJ
Manufacturer's Part Number:	AVG17A-50-C-2 and GG00C-11801 Category 5e
Manufacturer's Part Number:	ETL Verified to ANSI/TIA-568-C-2 and ISO/IEC 11801 Category 5e

**3P Party Testing**  
11 September 2017

**3P Party Testing**  
11 September 2017

**Olga Lashamane**  
Test Responsible

**Pedro Villegas**  
Coordinating Manager

*Independent Testing - For End User Confidence*

### Compliance Statement

**ISO/IEC, EN & TIA Unscreened  
Class E / Category 6  
VCP Connect + Three Connector Channel**

**Laumayer S.A.  
Carrera 50 C.No. 10 Sur-61  
Medellin, Colombia**  
Compliance Statement No. 117774

*This type of Class E / Category 6 unscreened three connector channel has been tested by 3P Third Party Testing and complies with the Class E requirements of Edition 2.2 of ISO/IEC 11801 and ISO/IEC 61881-2:2011, and Category 6 requirements of ISO/IEC 61881-2. The Compliance Statement is valid for the channel type in ITSSB designation and may be suspended or withdrawn if it fails to pass a Maintenance Testing performed not later than 31 September 2018. The channel consists of the following 10P Component components:*

Product Label:	4 pair, 23 AWG, UTP, CM, Nonhalogen Flame, Halophenol (SR9), Class E
Manufacturer:	LOVISOUJ
Manufacturer's Part Number:	AVG17A-50-C-2 and GG00C-11801 Category 5e
Manufacturer's Part Number:	ETL Verified to ANSI/TIA-568-C-2 and ISO/IEC 11801 Category 5e

**3P Party Testing**  
11 September 2017

**3P Party Testing**  
11 September 2017

**Olga Lashamane**  
Test Responsible

**Pedro Villegas**  
Coordinating Manager

*Independent Testing - For End User Confidence*

### Compliance Statement

**ISO/IEC, EN & TIA Screen Continuity  
Class E<sub>A</sub> / Category 6A  
VCP Connect + Two Connector Channel**

**Laumayer S.A.  
Carrera 50 C.No. 10 Sur-61  
Medellin, Colombia**  
Compliance Statement No. 117774

*This type of Class E<sub>A</sub> / Category 6A screen continuity two connector channel has been tested by 3P Third Party Testing and complies with the Class E<sub>A</sub> requirements of Edition 2.2 of ISO/IEC 11801 and ISO/IEC 61881-2:2011, and Category 6A requirements of ISO/IEC 61881-2. The Compliance Statement is valid for the channel type in ITSSB designation and may be suspended or withdrawn if it fails to pass a Maintenance Testing performed not later than 31 September 2018. The channel consists of the following 10P Component components:*

Product Label:	Category 6A, 4 pair, 23 AWG, UTP, CM, Halophenol (SR9), Class E <sub>A</sub>
Manufacturer:	LOVISOUJ
Manufacturer's Part Number:	AVG17A-50-C-2 and GG00C-11801 Category 5e
Manufacturer's Part Number:	ETL Verified to ANSI/TIA-568-C-2 and ISO/IEC 11801 Category 5e

**3P Party Testing**  
28 August 2017

**3P Party Testing**  
28 August 2017

**Olga Lashamane**  
Test Responsible

**Pedro Villegas**  
Coordinating Manager

*Independent Testing - For End User Confidence*

### Compliance Statement

**ISO/IEC, EN & TIA Screen Continuity  
Class E<sub>A</sub> / Category 6A  
VCP Connect + Two Connector Channel**

**Laumayer S.A.  
Carrera 50 C.No. 10 Sur-61  
Medellin, Colombia**  
Compliance Statement No. 117774

*This type of Class E<sub>A</sub> / Category 6A screen continuity two connector channel has been tested by 3P Third Party Testing and complies with the Class E<sub>A</sub> requirements of Edition 2.2 of ISO/IEC 11801 and ISO/IEC 61881-2:2011, and Category 6A requirements of ISO/IEC 61881-2. The Compliance Statement is valid for the channel type in ITSSB designation and may be suspended or withdrawn if it fails to pass a Maintenance Testing performed not later than 31 September 2018. The channel consists of the following 10P Component components:*

Product Label:	Category 6A, 4 pair, 23 AWG, UTP, CM, Halophenol (SR9), Class E <sub>A</sub>
Manufacturer:	LOVISOUJ
Manufacturer's Part Number:	AVG17A-50-C-2 and GG00C-11801 Category 5e
Manufacturer's Part Number:	ETL Verified to ANSI/TIA-568-C-2 and ISO/IEC 11801 Category 5e

**3P Party Testing**  
28 August 2017

**3P Party Testing**  
28 August 2017

**Olga Lashamane**  
Test Responsible

**Pedro Villegas**  
Coordinating Manager

*Independent Testing - For End User Confidence*

### Compliance Statement

**ISO/IEC, EN & TIA Screen Continuity  
Class E<sub>A</sub> / Category 6A  
VCP Connect + Two Connector Channel**

**Laumayer S.A.  
Carrera 50 C.No. 10 Sur-61  
Medellin, Colombia**  
Compliance Statement No. 117774

*This type of Class E<sub>A</sub> / Category 6A screen continuity two connector channel has been tested by 3P Third Party Testing and complies with the Class E<sub>A</sub> requirements of Edition 2.2 of ISO/IEC 11801 and ISO/IEC 61881-2:2011, and Category 6A requirements of ISO/IEC 61881-2. The Compliance Statement is valid for the channel type in ITSSB designation and may be suspended or withdrawn if it fails to pass a Maintenance Testing performed not later than 31 September 2018. The channel consists of the following 10P Component components:*

Product Label:	Category 6A, 4 pair, 23 AWG, UTP, CM, Halophenol (SR9), Class E <sub>A</sub>
Manufacturer:	LOVISOUJ
Manufacturer's Part Number:	AVG17A-50-C-2 and GG00C-11801 Category 5e
Manufacturer's Part Number:	ETL Verified to ANSI/TIA-568-C-2 and ISO/IEC 11801 Category 5e

**3P Party Testing**  
28 August 2017

**3P Party Testing**  
28 August 2017

**Olga Lashamane**  
Test Responsible

**Pedro Villegas**  
Coordinating Manager

*Independent Testing - For End User Confidence*

### Compliance Statement

**ISO/IEC, EN & TIA Screen Continuity  
Class E<sub>A</sub> / Category 6A  
VCP Connect + Two Connector Channel**

**Laumayer S.A.  
Carrera 50 C.No. 10 Sur-61  
Medellin, Colombia**  
Compliance Statement No. 117774

*This type of Class E<sub>A</sub> / Category 6A screen continuity two connector channel has been tested by 3P Third Party Testing and complies with the Class E<sub>A</sub> requirements of Edition 2.2 of ISO/IEC 11801 and ISO/IEC 61881-2:2011, and Category 6A requirements of ISO/IEC 61881-2. The Compliance Statement is valid for the channel type in ITSSB designation and may be suspended or withdrawn if it fails to pass a Maintenance Testing performed not later than 31 September 2018. The channel consists of the following 10P Component components:*

Product Label:	Category 6A, 4 pair, 23 AWG, UTP, CM, Halophenol (SR9), Class E <sub>A</sub>
Manufacturer:	LOVISOUJ
Manufacturer's Part Number:	AVG17A-50-C-2 and GG00C-11801 Category 5e
Manufacturer's Part Number:	ETL Verified to ANSI/TIA-568-C-2 and ISO/IEC 11801 Category 5e

**3P Party Testing**  
28 August 2017

**3P Party Testing**  
28 August 2017

**Olga Lashamane**  
Test Responsible

**Pedro Villegas**  
Coordinating Manager

*Independent Testing - For End User Confidence*

## CABLES DE COBRE PARA CABLEADO ESTRUCTURADO



CÓDIGO	REFERENCIA	DESCRIPCIÓN	PRECIO UNITARIO
<b>CABLES DE COBRE CATEGORÍA 5E</b>			
VCU0001A	LCV5ECMU-GR	CABLE CAT 5E, UTP-CM, 4PR 24AWG, 305M, COLOR GRIS	BAJO CONSULTA
<b>CABLES DE COBRE CATEGORÍA 6</b>			
VCU0001B	LCV6LSZH24-GR	CABLE CAT 6, UTP-LSZH, 4PR 24AWG, 305M, COLOR GRIS	BAJO CONSULTA
<b>CABLES DE COBRE CATEGORÍA 6A</b>			
VCU0001C	LCV6ALSZHUF-BL	CABLE CAT 6A, U/FTP-LSZH, 4PR 23AWG, 305M, COLOR GRIS	BAJO CONSULTA



## ELEMENTOS PARA CABLEADO ESTRUCTURADO CATEGORÍA 5E, 6 Y 6A



PCV6-xxB



PP6V-24



JT5EV-BL



JT6V-W

CÓDIGO	REFERENCIA	DESCRIPCIÓN	PRECIO UNITARIO	
<b>JACKS RJ45 CATEGORÍA 5E UTP, PONCHADO SIN HERRAMIENTA</b>				
VCU0002A	JT5EV-B	JACK CATEGORÍA 5E UTP AZUL, PONCHADO SIN HERRAMIENTA	USD	2,50
VCU0003A	JT5EV-W	JACK CATEGORÍA 5E UTP BLANCO, PONCHADO SIN HERRAMIENTA	USD	2,50
VCU0004A	JT5EV-BL	JACK CATEGORÍA 5E UTP NEGRO, PONCHADO SIN HERRAMIENTA	USD	2,50
<b>PATCHCORDS RJ45 UTP CAT 5E</b>				
VCU0006A	PCV5E-03B	PATCH CORD CATEGORÍA 5E UTP 3FT AZUL	USD	1,90
VCU0007A	PCV5E-10B	PATCH CORD CATEGORÍA 5E UTP 10FT AZUL	USD	4,35
VCU0009A	PCV5E-07B	PATCH CORD CATEGORÍA 5E UTP 7FT AZUL	USD	3,75
VCU0010A	PCV5E-07G	PATCH CORD CATEGORÍA 5E UTP 7FT GRIS	USD	3,75
<b>PATCH PANEL CATEGORÍA 5e UTP</b>				
VCU0005A	PP5EV-24	PATCH PANEL SOLIDO CATEGORÍA 5E 24 PUERTOS 1UR 19"	USD	45,00
<b>JACKS RJ45 CATEGORÍA 6 UTP, PONCHADO SIN HERRAMIENTA</b>				
VCU0002B	JT6V-B	JACK CATEGORÍA 6 UTP AZUL, PONCHADO SIN HERRAMIENTA	USD	3,10
VCU0003B	JT6V-W	JACK CATEGORÍA 6 UTP BLANCO, PONCHADO SIN HERRAMIENTA	USD	3,10
VCU0004B	JT6V-BL	JACK CATEGORÍA 6 UTP NEGRO, PONCHADO SIN HERRAMIENTA	USD	3,10
<b>PATCH CORDS RJ45 CATEGORÍA 6 UTP</b>				
VCU0005B	PCV6-03B	PATCH CORD CATEGORÍA 6 UTP 3FT AZUL	USD	3,15
VCU0006B	PCV6-03G	PATCH CORD CATEGORÍA 6 UTP 3FT GRIS	USD	3,15
VCU0007B	PCV6-10B	PATCH CORD CATEGORÍA 6 UTP 10FT AZUL	USD	5,20
VCU0008B	PCV6-10G	PATCH CORD CATEGORÍA 6 UTP 10FT GRIS	USD	5,20
VCU0011B	PCV6-07B	PATCH CORD CATEGORÍA 6 UTP 7FT AZUL	USD	4,25
VCU0012B	PCV6-07G	PATCH CORD CATEGORÍA 6 UTP 7FT GRIS	USD	4,25
<b>PATCH PANEL CATEGORÍA 6 UTP</b>				
VCU0009B	PP6V-24	PATCH PANEL SOLIDO CATEGORÍA 6 24 PUERTOS 1UR 19"	USD	60,00
VCU0010B	PP6V-48	PATCH PANEL SOLIDO CATEGORÍA 6 48 PUERTOS 2UR 19"	USD	120,00

# ELEMENTOS PARA CABLEADO ESTRUCTURADO CATEGORÍA 5E, 6 Y 6A



CÓDIGO	REFERENCIA	DESCRIPCIÓN	PRECIO UNITARIO
<b>JACKS RJ45 CATEGORÍA 6A BLINDADOS, PONCHADO SIN HERRAMIENTA</b>			
VCU0002C	J6AV-SH	JACK CATEGORÍA 6A FTP, PONCHADO SIN HERRAMIENTA	USD 7,00
<b>JACKS RJ45 CATEGORÍA 6A UTP, PONCHADO SIN HERRAMIENTA</b>			
VCU0010C	J6AV-W	JACK CATEGORÍA 6A UTP BLANCO, PONCHADO SIN HERRAMIENTA	USD 3,35
VCU0011C	J6AV-B	JACK CATEGORÍA 6A UTP AZUL, PONCHADO SIN HERRAMIENTA	USD 3,35
<b>PATCH CORD S/FTP RJ45 CATEGORÍA 6A</b>			
VCU0003C	PCV6A-03B	PATCH CORD CATEGORÍA 6A SFTP 3FT AZUL	USD 5,15
VCU0004C	PCV6A-03W	PATCH CORD CATEGORÍA 6A SFTP 3FT BLANCO	USD 5,15
VCU0005C	PCV6A-10B	PATCH CORD CATEGORÍA 6A SFTP 10FT AZUL	USD 8,20
VCU0006C	PCV6A-10W	PATCH CORD CATEGORÍA 6A SFTP 10FT BLANCO	USD 8,20
VCU0008C	PCV6A-7B	PATCH CORD CATEGORÍA 6A SFTP 7FT AZUL	USD 6,75
VCU0009C	PCV6A-7G	PATCH CORD CATEGORÍA 6A SFTP 7FT GRIS	USD 6,75



J6AV-SH

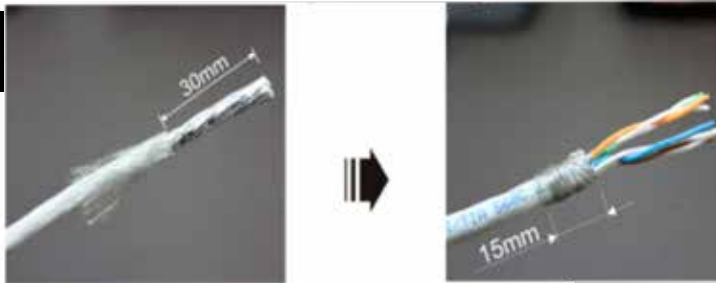
## COMPLEMENTOS Y ACCESORIOS PARA CABLEADO ESTRUCTURADO

CÓDIGO	REFERENCIA	DESCRIPCIÓN	PRECIO UNITARIO	
<b>PATCH PANNEL VACÍOS</b>				
VCU0001D	BPPV-24	PATCH PANNEL VACÍO PARA 24 JACKS UTP 1UR 19"	USD	30,00
VCU0002D	BPPV-48	PATCH PANNEL VACÍO PARA 48 JACKS UTP 2UR 19"	USD	60,00
VCU0003D	BPPV-24SH	PATCH PANNEL VACÍO PARA 24 JACKS FTP 1UR 19"	USD	35,00
VCU0004D	BPPV-48SH	PATCH PANNEL VACÍO PARA 48 JACKS FTP 2UR 19"	USD	60,00
<b>FACE PLATES</b>				
VCU0005D	FPV-1P	FACEPLATE, PLACA DE 1 ESPACIO, BLANCO	USD	1,00
VCU0006D	FPV-2P	FACEPLATE, PLACA DE 2 ESPACIO, BLANCO	USD	1,00
<b>HERRAMIENTAS DE TERMINACIÓN</b>				
VCU0007D	CTV-RJ	PONCHADORA METÁLICA PARA PLUG RJ45/RJ11	USD	22,00
VCU0008D	CTV-IDC	PONCHADORA DE IMPACTO	USD	13,00
<b>ACCESORIOS</b>				
VCU0008A	MPV5E-RJ45	PLUG MODULAR RJ45 CAT 5E, 50µm	USD	0,25
VCU0007C	MPV6ASH-RJ45	PLUG MODULAR RJ45 CAT 6A BLINDADO	USD	7,75
VCU0009D	BRJ45V-B	BOTA PROTECTORA AZUL PARA PLUG	USD	0,10
VCU0010D	BRJ45V-G	BOTA PROTECTORA GRIS PARA PLUG	USD	0,10

# GUÍA DE PONCHADO DE JACKS CATEGORÍA 6A BLINDADO

- Remueva 3 cm de la chaqueta del cable baje la pantalla con foil o malla que cubre los pares y colóquela sobre la chaqueta del cable.

CABLE  
BLINDADO

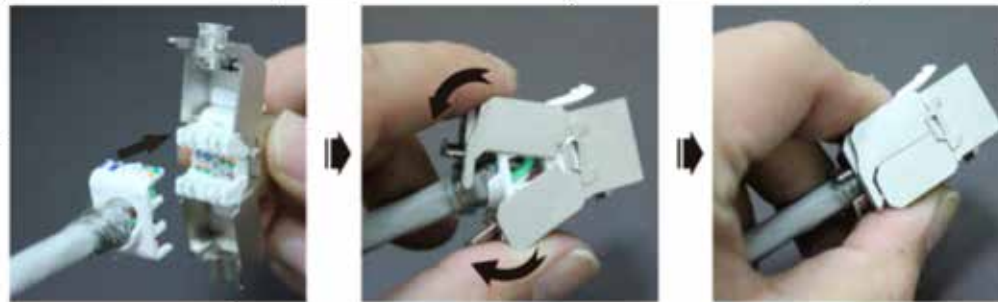


1. Pase los cables a través del organizador , Inserte cada par de cables en la posición designada según el esquema de código de colores. Recorte al ras el exceso de cable

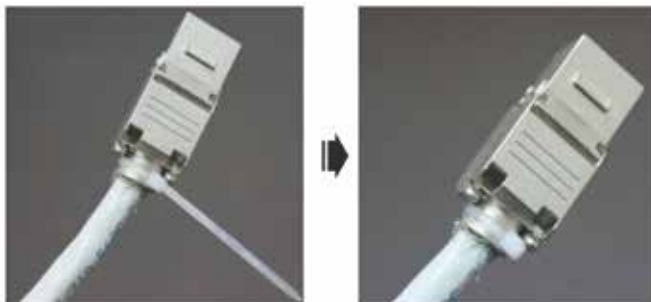


**!Precaución!** Los excesos de cables deben ser cortados al ras de la tapa, de lo contrario esto podría causar una terminación incorrecta y presentar fallas.

3. Asegúrese de que cada cable ajuste en la ranura de forma segura. Cubra el organizador de cables precableado. Presione uniformemente las alas de la tapa una hacia la otra hasta que cierre automáticamente.



- 4 Envuelva el hilo de tierra alrededor del blindaje, para asegurar la conexión a tierra. Corte el exceso.



**NOTA**

Si cualquier conductor fue terminado y quedo mas grande de 0.6mm(23 AWG). Reducirlos ya no es posible.

**Desconexión**



Corte la correa. Use un destornillador plano para desbloquear el conector.

